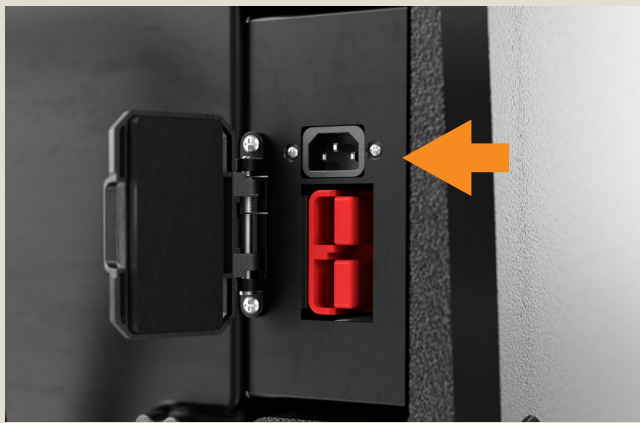


# Use and maintenance

## Operating guidelines ROS1300



Disconnect the battery charger and store the cable.



Check the solution level on the side of the machine. Add fresh water as needed by removing the red cap on the fill port.



Ensure the main broom and side brooms are properly installed.



Adjust the seat to a comfortable working position.



Insert the operator key, and turn to start the sweeper.



Press the OneTouch™ button to enable all sweeping functions, the brooms will lower automatically.



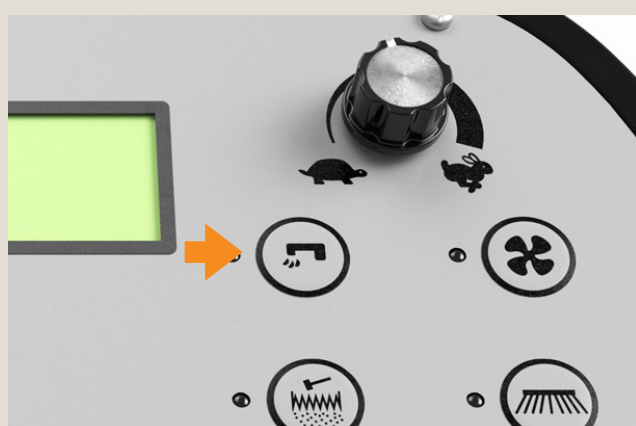
The brushes and vacuum will start when the drive pedal is pressed, start sweeping.



Turn the speed knob to adjust and set maximum speed with full pressed drive pedal.



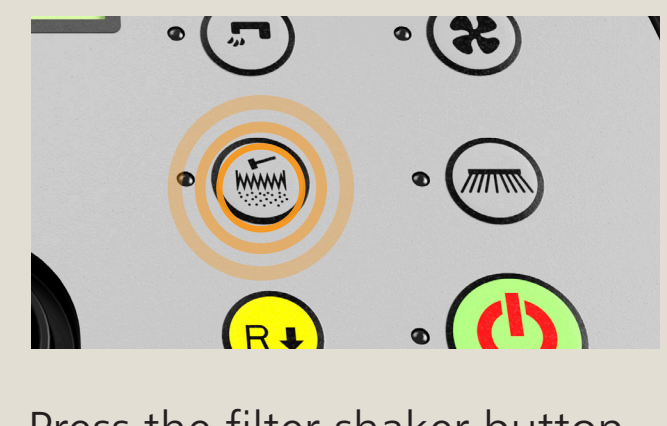
Adjust the speed of the side brooms by changing the side broom speed knob.



Press the water misting button to start the water spray for the side brooms used in dusty or outdoor applications.



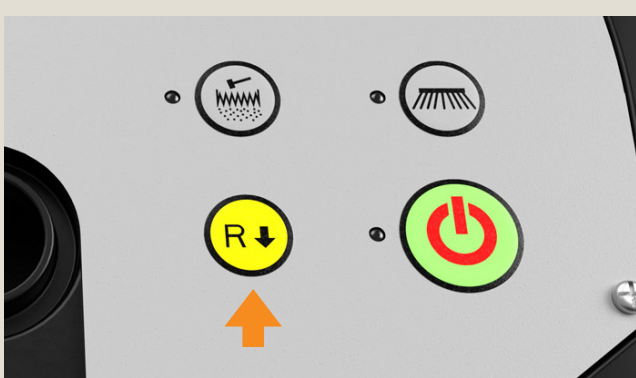
Press the front flap pedal to open the front flap for sweeping larger debris.



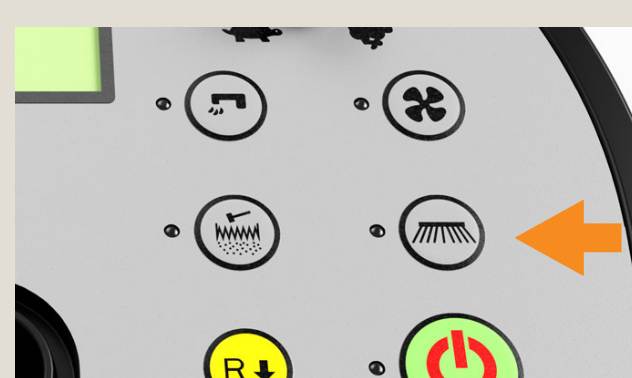
Press the filter shaker button to clean the filter. Hold the button until the light blinks to enable automatic shaking every 10 minutes.



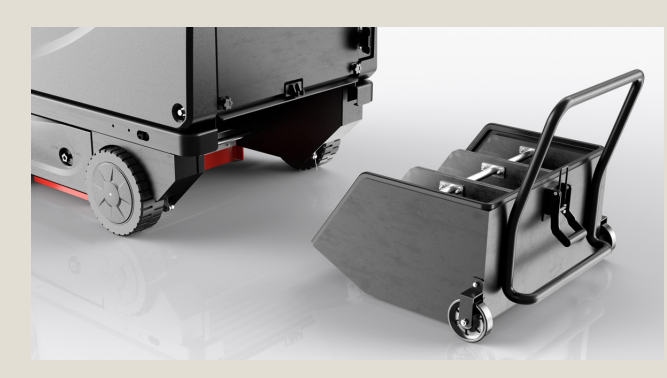
Use the turning signals when turning, right/left lights located only in the rear.



Press the reverse button to move the sweeper backwards. Machine does not sweep in reverse.



Press the side broom button to lift the side brooms and use the machine with only main broom.



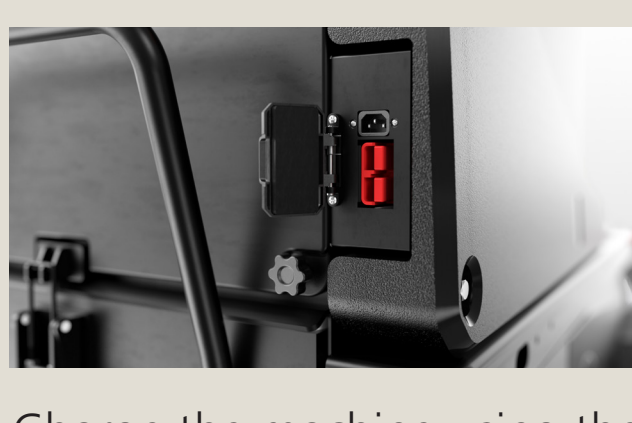
Press the OneTouch™ button to stop all functions. Slowly release the hopper locking mechanism as it may be heavy. Use the handle to remove and empty the hopper.



Remove the rear filter panel to check the filter, reinstall panel and hopper.



Remove, clean and inspect the main broom and check the side brooms. Clean the machine with a wet cloth.



Charge the machine using the rear charging connection. It has two connections, one for external charger and one if on-board charger is installed.

# Troubleshooting

## Operating guidelines ROS1300

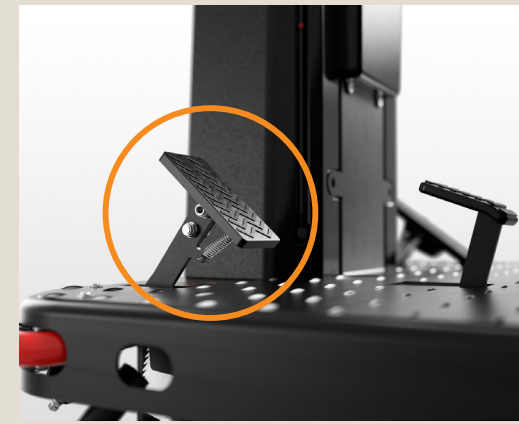
The machine doesn't work as it should.



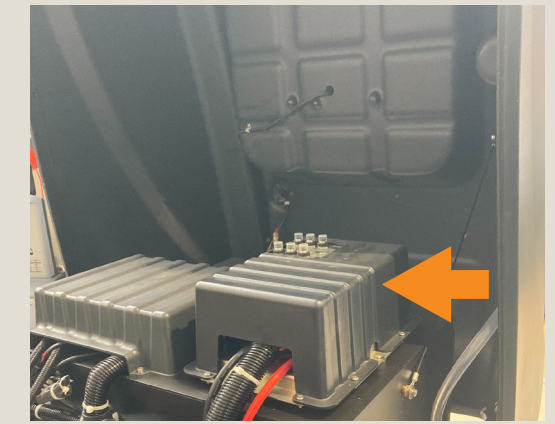
1. Check if the battery is charged.
2. Check if the emergency stop button is activated.



3. Check if the main battery connector is properly connected.



4. Check if the parking brake pedal is engaged.

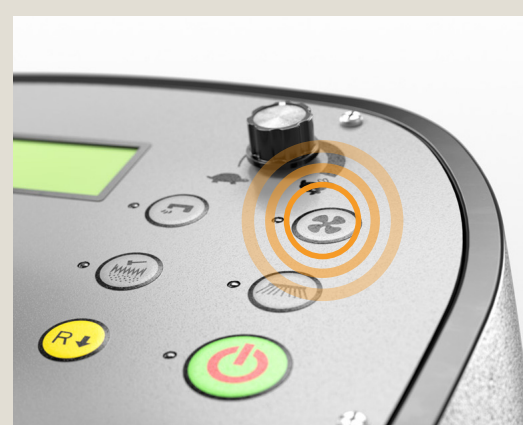


5. Open machine cover and check so no fuses have tripped.

The machine doesn't contain the dust.



1. Check if all blades are correctly adjusted and not damaged.



2. Check if the vacuum system is switched on.



3. Clean the panel filter by pressing the filter shaker button.



4. Check to see if the debris hopper is full.



5. Check the vacuum and filter shaker circuit breakers.

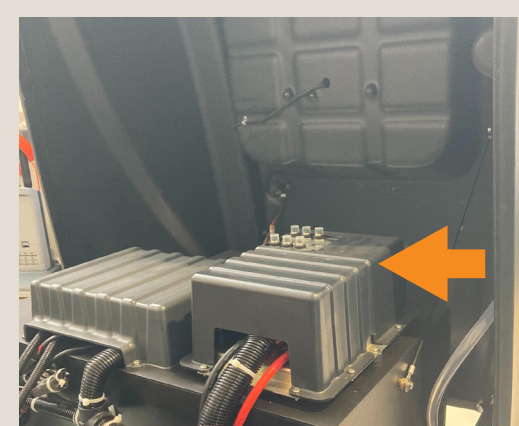
The machine doesn't sweep.



1. Inspect the main broom, make sure it's turning and is not worn out. Adjust broom pressure if needed.



2. Adjust the side broom if needed, replace the side broom if bristles are worn out.



3. Open the machine cover and check the broom circuit breakers.

Local Viper dealer:

Phone number:

SN: